

Information about your Nobi Light

nobi
at a glance

FOR RESIDENTS



Dear resident,

Exciting news! Your care facility is implementing Nobi's smart lights for fall detection and prevention.

Your caregivers will soon explain how Nobi works.

Meanwhile, read this brief leaflet to discover the basic principles. Don't hesitate to pass this on to your family members.

For further questions, please contact your caregivers.

Best regards,



Roeland Pelgrims,
CEO Nobi

**The world's smartest
light is here to make
your life safer, easier
and cosier!**



Nobi, partner to older adults

As we age, a fall can significantly impact our lives.

Quick assistance after a fall is crucial, but preventing falls in the first place is even better. That's precisely what Nobi is designed to do.

- Nobi is a smart light that immediately alerts caregivers if a fall occurs, ensuring prompt help.
- Nobi helps prevent falls by providing optimal lighting tailored to your needs.
- Nobi is simple, discreet, user-friendly, and cosy.



Scan to watch
a two-minute video
about Nobi.

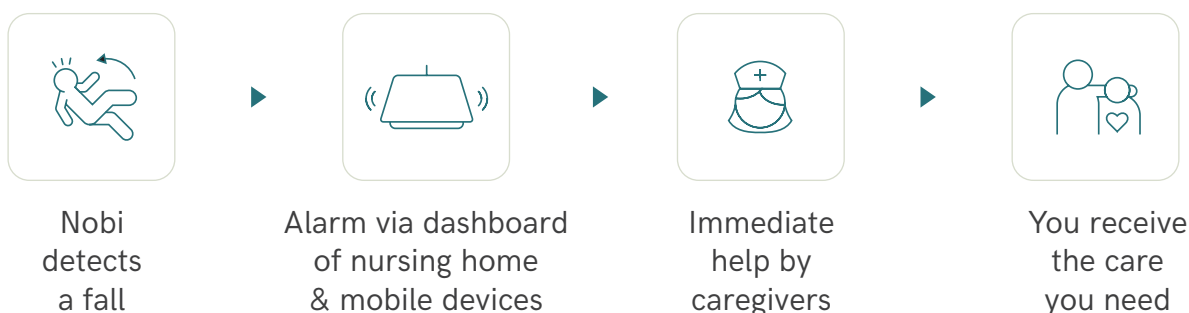


Nobi's fall detection

If everything is fine, your Nobi light simply provides the proper lighting when needed.

However, if you fall, Nobi's AI detects it immediately and alerts the care staff, allowing them to provide prompt assistance.

Hopelessly waiting after a fall is a thing of the past, providing reassurance for you, your loved ones and caregivers.



Nobi's fall prevention

Care communities have the option to activate Nobi's fall prevention features. By closely collaborating with care professionals, Nobi has demonstrated she can **prevent up to 84% of falls**.

Nobi can prevent up to 84% of falls

Nobi achieves this in three ways:

1 The perks of automated lighting

How Nobi's automated lighting works:

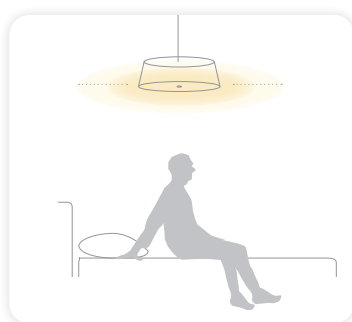
- **You enter the room:**
the light automatically goes on.
- **You leave the room:**
the light automatically goes out after a specific time.
- **You wake up during the night:**
gentle illumination when you sit on the bed, and bright light when you get out of bed.

Automatic light

- increases safety
- reduces disorientation



during sleep
no light



when sitting up
soft light



out of bed
brighter light

2 Proactive help in high-risk situations

If you have a high fall risk, Nobi can notify caregivers when:

- You are sitting on the bed for a certain number of minutes.
- You are out of bed for a certain number of minutes.
- You are in the bathroom for a certain number of minutes.
- No one is in the room for a certain number of minutes.

Why is this useful? These notifications allow your caregivers to proactively check on you whenever there is a risk of falling.

3 Discover the cause of a fall

In the event of a fall, Nobi provides insights into the possible cause, helping to prevent future falls.

Important! Only you can decide if your caregivers can access these insights. You can specify your preferences in the Informed Consent Document.



Did you know that 62% of falls happen during the night?

Nobi's automated lighting helps to prevent falls, especially at night.

Good to know

When a caregiver enters your room at night for a routine check while you are sleeping, the light remains off, ensuring that you won't wake up.

100% privacy: you are always in control

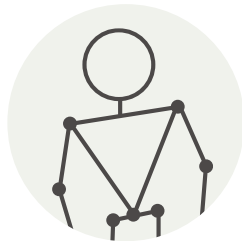
Nobi uses optical care sensors and artificial intelligence to detect falls. Nobi analyses all images locally and only forwards images in the event of a fall.

Important:

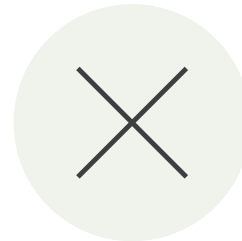
You decide how images are shared with your caregivers:



Option 1
Full image



Option 2
**An anonymized
stick figure**



Option 3
No image at all

Good to know:

when you choose option 1, your caregivers can obtain insights into:

- The kind of help you need.
- Possible causes of your fall. This helps prevent possible future falls.

Images are view-only and are automatically deleted after 14 days.

Privacy is also about enjoying your personal space

Nobi alerts your caregivers when something is wrong and assistance is needed, reducing the need for frequent check-ins. This means caregivers enter your room less often and only when needed, allowing you to enjoy greater privacy.

Informed consent comes first

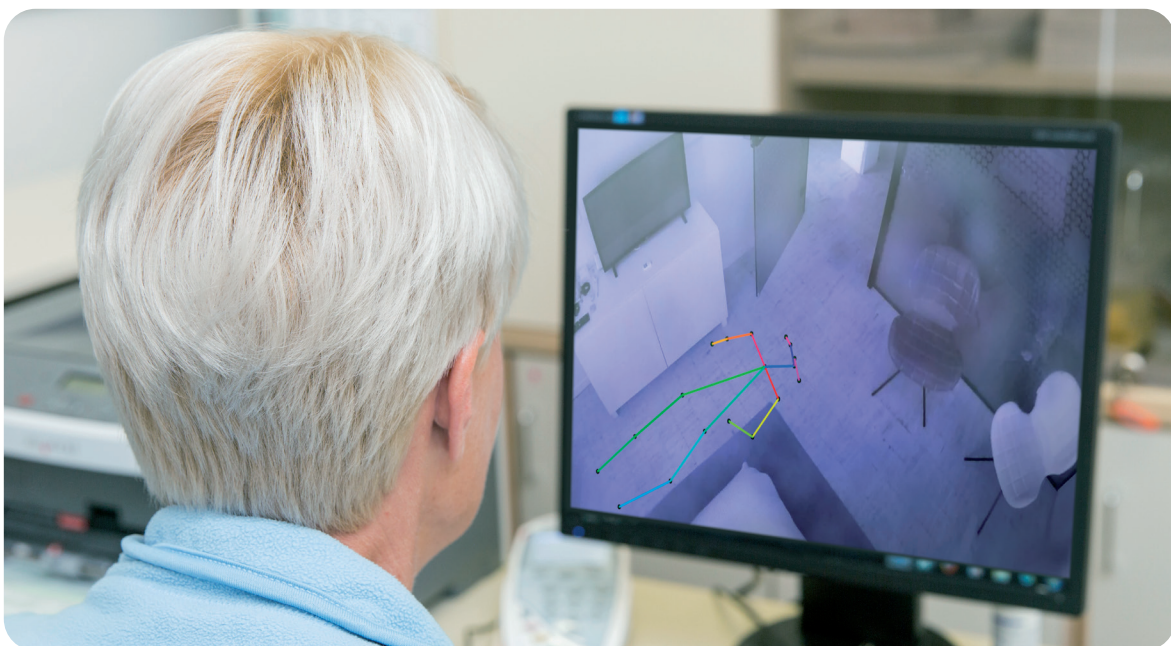
Your care community needs your consent to set up your Nobi light according to your preferences. Your caregivers will ask you to sign the attached Informed Consent Document.




Once signed, the smart features of your Nobi light will be activated. The lighting will function immediately, but the fall detection feature requires a brief learning period to optimise its settings.

In the meantime, enjoy the Nobi light!

**Do you have any
questions?
Ask your caregiver!**





Warm Lighting
Beautiful Design
Lifesaving Technology

www.nobi.life